

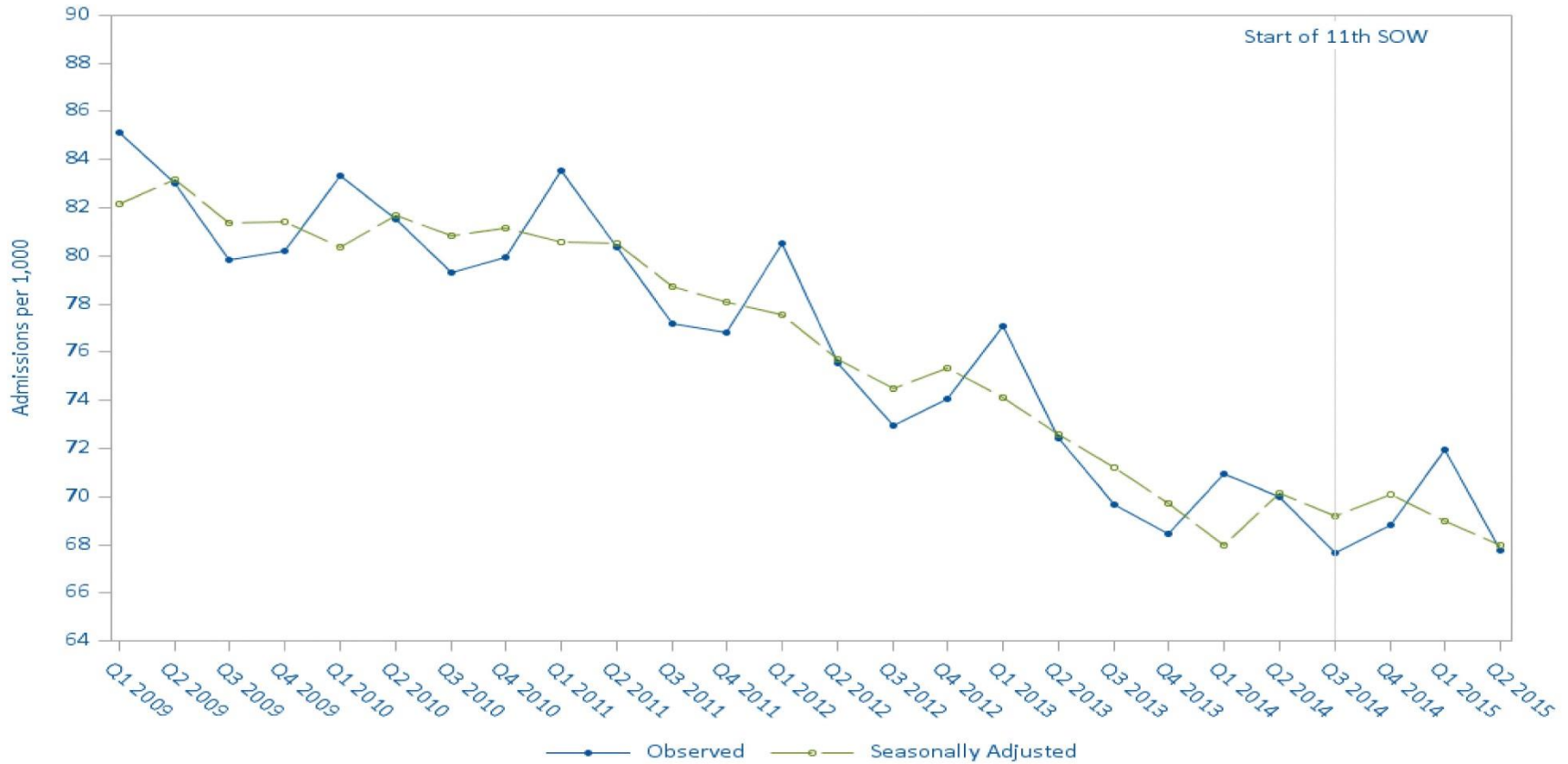
Central and Heart of Texas Care Coordination and Medication Safety Coalition Meeting

Quarter 2 2015 Readmission Data

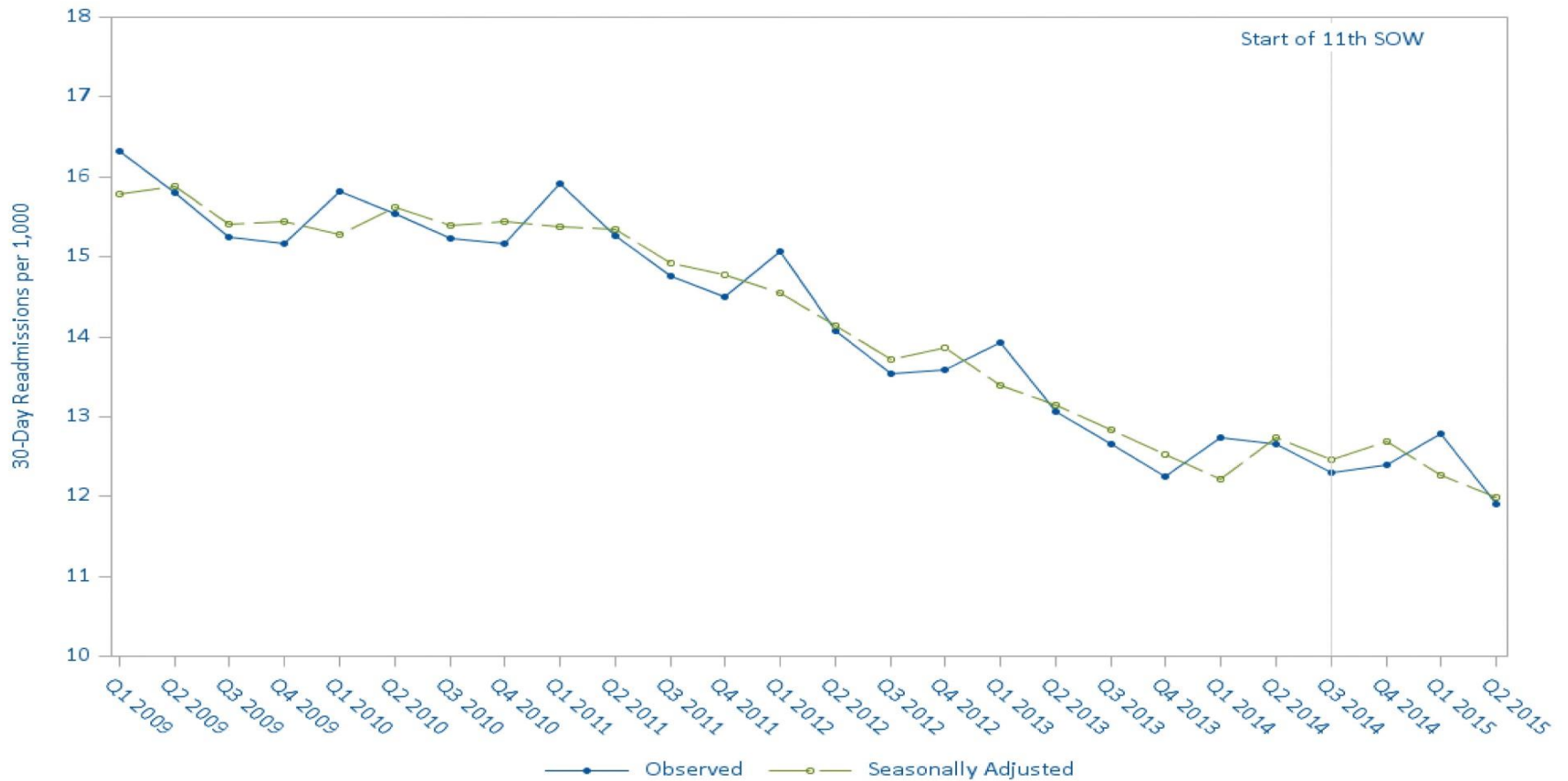
Agenda

National, TMF QIN, state and community readmission reports

National Quarterly Admissions per 1,000 Beneficiaries



National Quarterly 30-Day Readmissions per 1,000 Beneficiaries

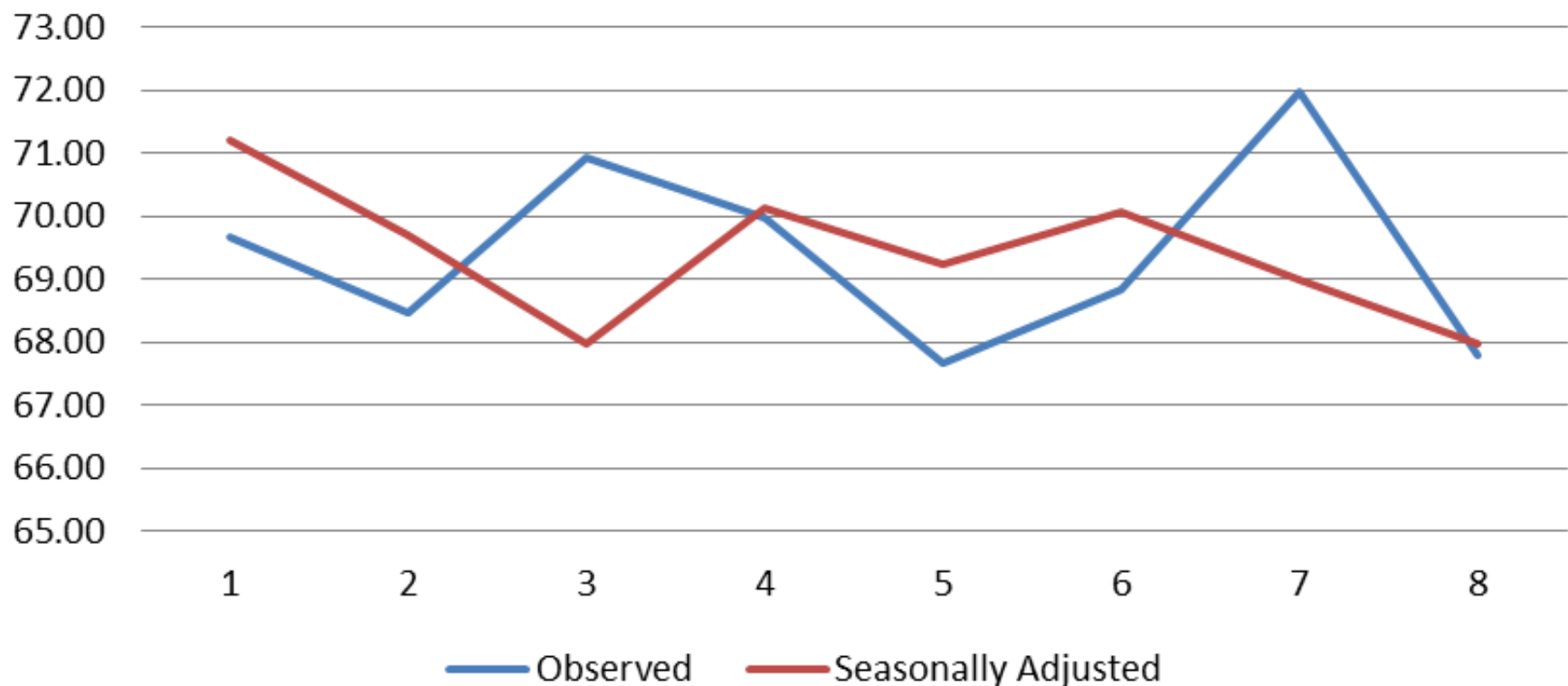


National Quarterly Admissions and Readmissions per 1,000

						Admissions per 1,000 benes		Readmissions per 1,000 benes		Readmission Percent
Start Date	End Date	Admissions	Readmissions	Live Discharges	Eligible Beneficiaries	Observed	Seasonally Adjusted	Observed	Seasonally Adjusted	Observed / Live Discharges
7/1/2013	9/30/2013	2,591,654	471,075	2,514,085	37,199,414	69.67	71.21	12.66	12.83	18.74%
10/1/2013	12/31/2013	2,561,072	458,060	2,476,521	37,405,564	68.47	69.71	12.25	12.53	18.50%
1/1/2014	3/31/2014	2,629,658	472,299	2,538,145	37,067,545	70.94	67.98	12.74	12.21	18.61%
4/1/2014	6/30/2014	2,602,567	471,032	2,522,505	37,198,891	69.96	70.14	12.66	12.74	18.67%
7/1/2014	9/30/2014	2,525,396	459,017	2,449,052	37,315,969	67.68	69.22	12.30	12.47	18.74%
10/1/2014	12/31/2014	2,580,269	464,860	2,494,170	37,483,659	68.84	70.08	12.40	12.68	18.64%
1/1/2015	3/31/2015	2,675,375	475,571	2,579,307	37,177,878	71.96	69.00	12.79	12.26	18.44%
4/1/2015	6/30/2015	2,526,080	443,919	2,448,761	37,265,584	67.79	67.96	11.91	11.99	18.13%

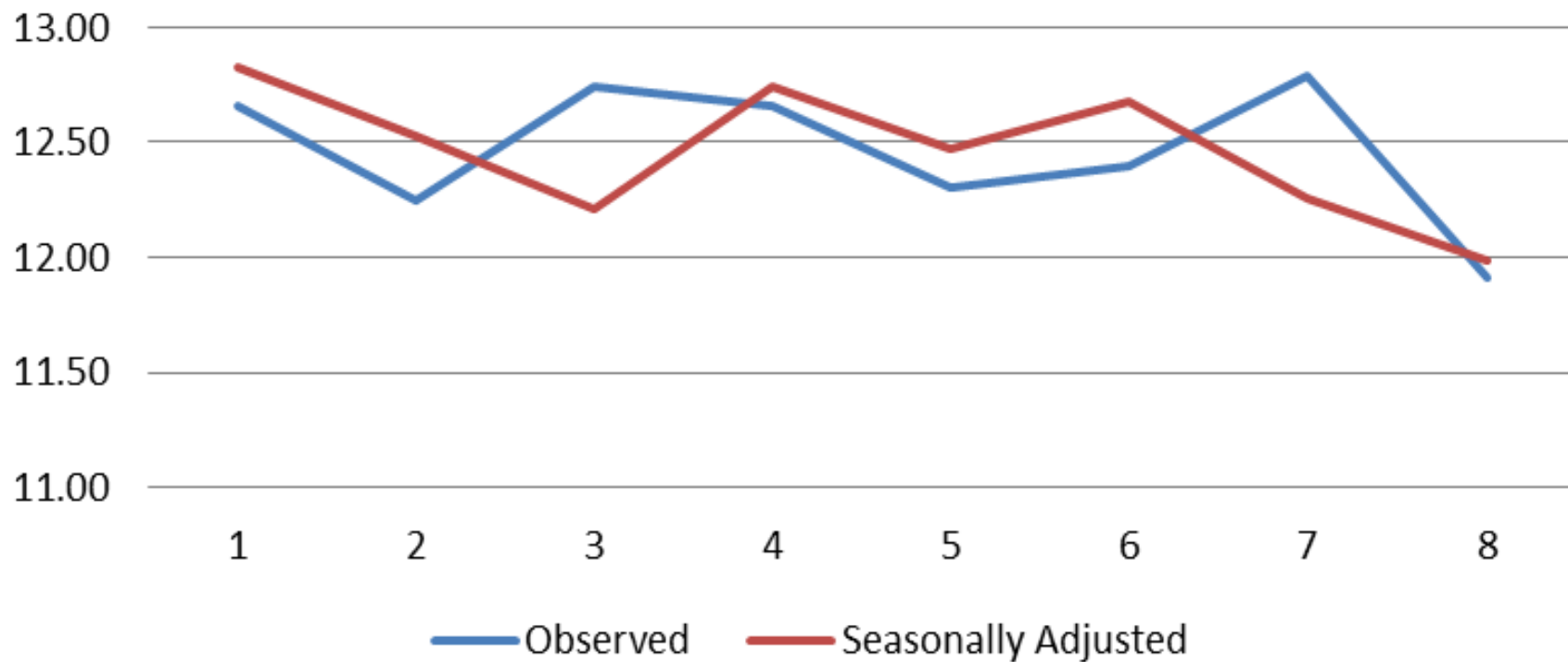
Source: NCC Scorecard Dec 2015. CMS FFS data 7/1/2013 – 6/30/2015

National Quarterly Admissions per 1,000



Source: NCC Scorecard Dec 2015. CMS FFS data 7/1/2013 -6/30/2015

National Quarterly Readmissions per 1,000



QIN Region: Discharge Disposition After Inpatient Hospitalization and 30-Day Readmission Rates

QIN Region (AK, OK, MO, PR, TX)	Setting	Number of Discharges	% of All Discharges	30-day Readmits	Rate of 30-day Readmits
Region	Home Health Agency	21,076	7.5%	3,409	16.2%
	Home	186,653	66.3%	29,498	15.8%
	Hospice	10,563	3.8%	251	2.4%
	Inpatient Rehabilitation Facility	14,766	5.2%	2,300	15.6%
	Long-Term Acute Care	5,477	1.9%	666	12.2%
	Skilled Nursing Facility	42,833	15.2%	8,146	19.0%
	All		281,368	100.0%	44,270

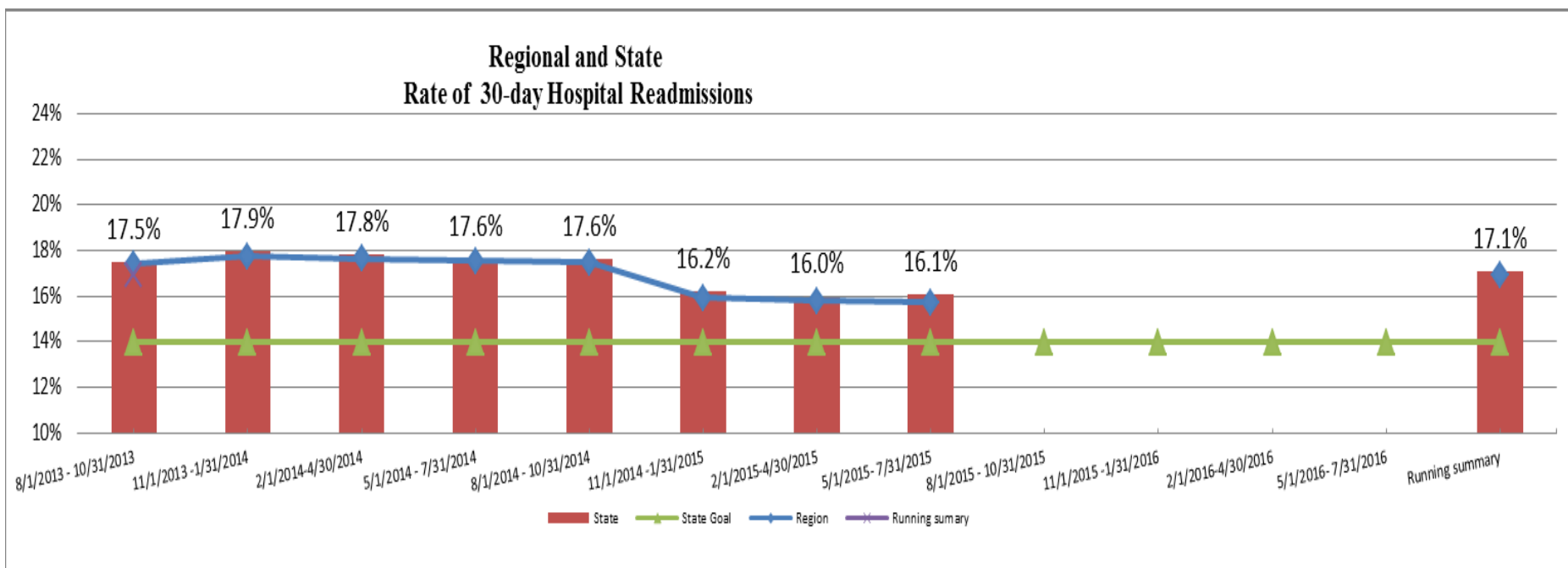
Source: Medicare FFS Claims. Time Period: 5/1/2015 -7/31/2015.

Texas: Discharge Disposition After Inpatient Hospitalization and 30-Day Readmission Rates

	Setting	Number of Discharges	% of All Discharges	30-day Readmits	Rate of 30-day Readmits
Texas	Home Health Agency	25,373	15.7%	4,436	17.5%
	Home	87,497	54.3%	16,246	18.6%
	Hospice	7,146	4.4%	183	2.6%
	Inpatient Rehabilitation Facility	9,912	6.1%	1,717	17.3%
	Long-Term Acute Care	5,764	3.6%	683	11.9%
	Nursing Home	25,549	15.8%	5,258	20.6%
	All		161,241	100.0%	28,523

Source: Medicare FFS Claims. Time Period: 5/1/2015 -7/31/2015

QIN Region and Texas Rate of 30-Day Hospital Readmissions



Source: Medicare FFS Claims. Time Period: 5/1/2015 -7/31/2015

QIN Region and Texas 30-Day Hospital Discharges, Readmissions and Rates by Quarter

		11/1/2014 - 1/31/2015	2/1/2015- 4/30/2015	5/1/2015- 7/31/2015
Texas	Inpatient hospital discharges	160,969	159,801	155,449
	Readmits with 30 days	26,047	25,517	24,956
	Rate of 30-day readmits (%)	16.2%	16.0%	16.1%
	Goal (%)	14.0%	14.0%	14.0%
QIN Region	Rate of 30-day readmits (%)	15.9%	15.8%	15.7%

Source: Medicare FFS Claims. Time Period: 5/1/2015 -7/31/2015

QIN Region and Texas Readmission Rates by Care Setting Quarterly

QIN Region Setting	11/1/2014-1/31/2015	2/1/2015-4/30/2015	5/1/2015-7/31/2015
Home Health Agency	16.4%	15.6%	16.2%
Home	15.9%	15.8%	15.8%
Hospice	1.9%	2.0%	2.4%
Inpatient Rehabilitation Facility	16.4%	16.6%	15.6%
Long-Term Acute Care	12.0%	11.9%	12.2%
Nursing Home	19.6%	19.5%	19.0%

Texas Setting	11/1/2014-1/31/2015	2/1/2015-4/30/2015	5/1/2015-7/31/2015
Home Health Agency	16.5%	15.9%	16.2%
Home	16.5%	16.2%	16.4%
Hospice	2.3%	2.2%	2.6%
Inpatient Rehabilitation Facility	16.2%	16.5%	15.6%
Long-Term Acute Care	11.4%	11.0%	12.0%
Nursing Home	19.1%	19.2%	19.1%

Source: Medicare FFS Claims. Time Period: 5/1/2015 -7/31/2015

Top Five MS DRGs with 30-Day Readmit Rates for QIN Region and Texas

State and Community	DRG Code	DRG Description	Number of Discharges	30-day Readmits	Rate of 30-day Readmits
QIN Region	871	Septicemia or severe sepsis w/o mv 96+ hours w mcc	13,094	2,156	16.5%
	291	Heart failure & shock w mcc	5,718	1,323	23.1%
	292	Heart failure & shock w cc	5,489	1,193	21.7%
	682	Renal failure w mcc	3,738	866	23.2%
	683	Renal failure w cc	4,839	864	17.9%

Texas	871	Septicemia or severe sepsis w/o mv 96+ hours w mcc	7,365	1,213	16.5%
	291	Heart failure & shock w mcc	3,195	742	23.2%
	292	Heart failure & shock w cc	3,026	677	22.4%
	682	Renal failure w mcc	2,138	510	23.9%
	683	Renal failure w cc	2,692	492	18.3%

Source: Medicare FFS Claims. Time Period: 5/1/2015 -7/31/2015.

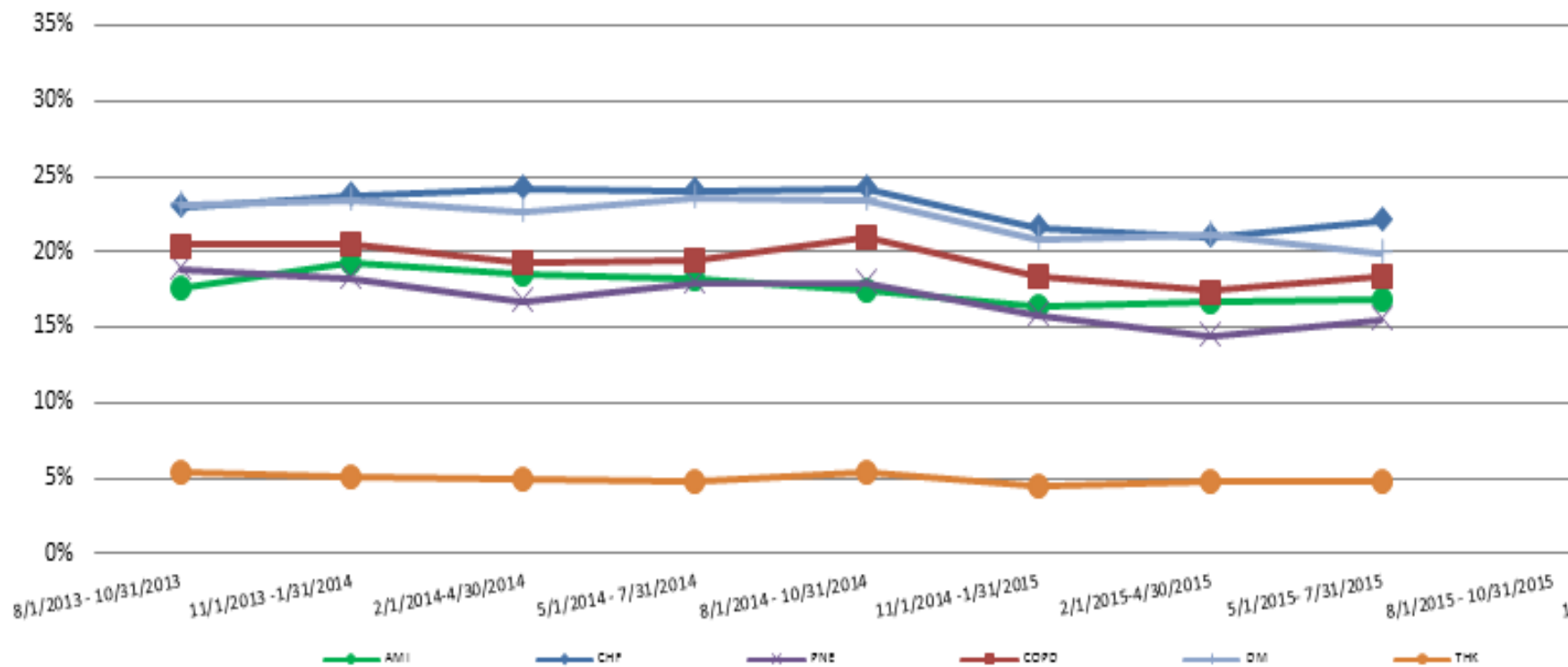
QIN Region and Texas Beneficiaries by Frequency of 30-Day Readmissions

QIN Region		
Frequency of Readmits	Number of Beneficiaries	Percent of Beneficiaries
13	1	0.0004%
10	1	0.0004%
9	6	0.0026%
8	8	0.0034%
7	14	0.0060%
6	52	0.0224%
5	111	0.0477%
4	379	0.1629%
3	1,321	0.5679%
2	5,467	2.3502%
1	27,138	11.6662%
0	198,123	85.1699%

Texas		
Frequency of Readmits	Number of Beneficiaries	Percent of Beneficiaries
13	1	0.0008%
9	6	0.0047%
8	6	0.0047%
7	12	0.0094%
6	35	0.0274%
5	56	0.0438%
4	225	0.1759%
3	723	0.5653%
2	3,024	2.3646%
1	15,150	11.8463%
0	108,650	84.9572%

Source: Medicare FFS Claims. Time Period: 5/1/2015 -7/31/2015

Texas Rate of 30-Day Readmits for Specific Diseases



Medicare Penalty Diagnoses

Diagnosis	ICD-9 Code for TMF Readmission Reports
Congestive Heart Failure (CHF)	40201 40211 40291 40401 40403 40411 40413 40491 40493 4280 4281 42820 42821 42822 42823 42830 42831 42832 42833 42840 42841 42842 42843 4289
Acute Myocardial Infarction (AMI)	41000 41001 41010 41011 41020 41021 41030 41031 41040 41041 41050 41051 41060 41061 41070 41071 41080 41081 41090 41091
Pneumonia (PNE)	4800 4801 4802 4803 4808 4809 481 4820 4821 4822 48230 48231 48232 48239 48240 48241 48249 48281 48282 48283 48284 48289 4829 4830 4831 4838 485 486 4870
Chronic Obstructive Pulmonary Disease (COPD)	4928 496 4912 49120 49121 49122 490 4910 4911 4918 4919 4920 494 4940 4941
Diabetes (DM)	V6546 V5391 V4585 7916 7915 79029 79022 79021 7902 25001 24900 25000 25093 25092 25002 25091 25090 25083 25071 25073 25063 25062 25053 25051 25050 25043 25042 25041 25040 25033 25032 25052 25031 25030 25023 25022 25021 25020 25061 25070 25013 25012 25072 25011 25060 25010 25003 25080 25082 25081 24991 24990 24981 24980 24971 24970 24961 24960 24951 24941 24940 24931 24930 24911 24910 24920 24921 24901 24950
Hip/Knee (THK)	81.51 81.54

Central and Heart of Texas Care Coordination and Medication Safety Coalition Meeting

Central and Heart of Texas Readmission Rates by Provider Type

	Setting	Number of Discharges	% of All Discharges	30-day Readmits	Rate of 30-day Readmits
Your Community	Home Health Agency	456	8.3%	105	23.0%
	Home	3,581	65.0%	575	16.1%
	Hospice	250	4.5%	9	3.6%
	Inpatient Rehabilitation Facility	89	1.6%	15	16.9%
	Long-Term Acute Care	52	0.9%	7	13.5%
	Nursing Home	1,081	19.6%	206	19.1%
	All		5,509	100.0%	917

Source: Medicare FFS Claims. Time Period: 5/1/2015 -7/31/2015

Central and Heart of Texas: Community Top Five MS DRGs and Their 30-Day Inpatient Readmission Rates

	DRG Code	DRG Description	Number of Discharges	30-day Readmits	Rate of 30-day Readmits
Your Community	871	Septicemia or severe sepsis w/o mv 96+ hours w mcc	328	56	17.1%
	291	Heart failure & shock w mcc	148	34	23.0%
	292	Heart failure & shock w cc	118	31	26.3%
	392	Esophagitis, gastroent & misc digest disorders w/o mcc	117	20	17.1%
	682	Renal failure w mcc	62	19	30.6%

Source: Medicare FFS Claims. Time Period: 5/1/2015 -7/31/2015.

Central and Heart of Texas: Community Medicare Beneficiaries Profiled by Frequency of 30-day Readmissions

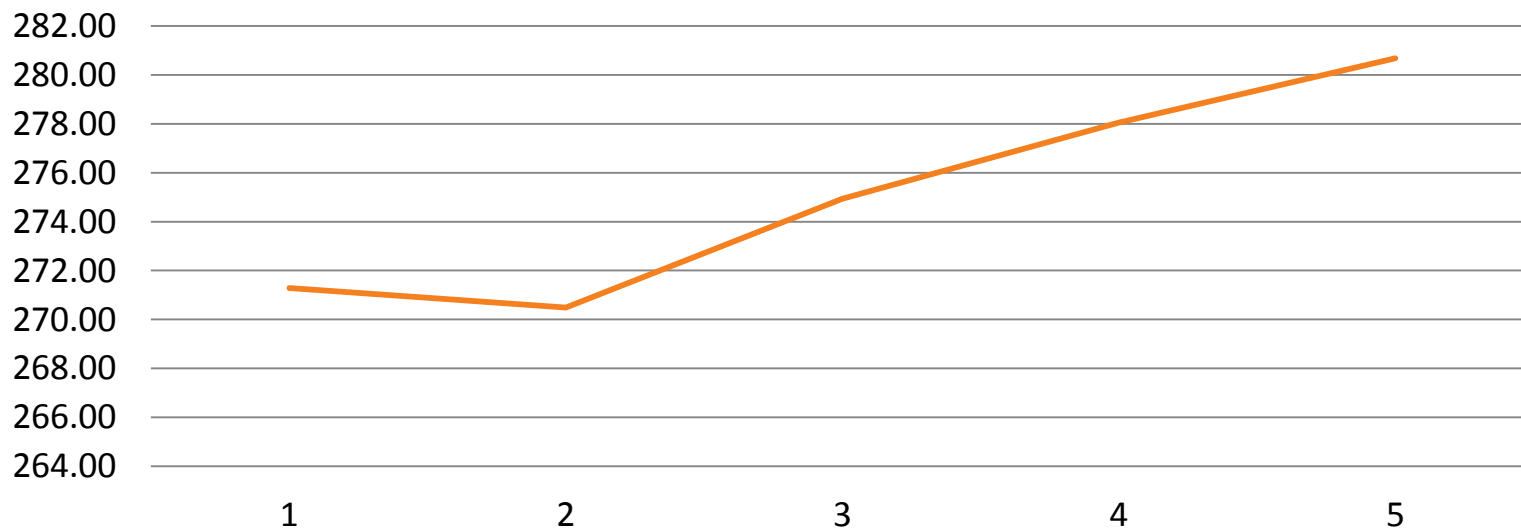
Frequency of Readmits	Number of Beneficiaries	Percent of Beneficiaries
9	1	0.0222%
8	1	0.0222%
6	1	0.0222%
5	3	0.0665%
4	9	0.1995%
3	35	0.7757%
2	100	2.2163%
1	538	11.9238%
0	3,824	84.7518%

Source: Medicare FFS Claims. Time Period: 5/1/2015 -7/31/2015

							Rates per 1,000 benes		Readmission Percent
Name	Start Date	End Date	Admissions	Readmissions	Live Discharges	Eligible Beneficiaries	Admissions	Readmissions	Observed / Live Discharges
Central and Heart of Texas	7/1/2013	6/30/2014	22,539	4,032	21,965	83,085	271.28	48.53	18.36%
Central and Heart of Texas	10/1/2013	9/30/2014	22,517	4,021	21,926	83,246	270.49	48.30	18.34%
Central and Heart of Texas	1/1/2014	12/31/2014	22,905	4,126	22,273	83,309	274.94	49.53	18.52%
Central and Heart of Texas	4/1/2014	3/31/2015	23,199	4,245	22,547	83,436	278.05	50.88	18.83%
Central and Heart of Texas	7/1/2014	6/30/2015	23,438	4,313	22,803	83,503	280.68	51.65	18.91%

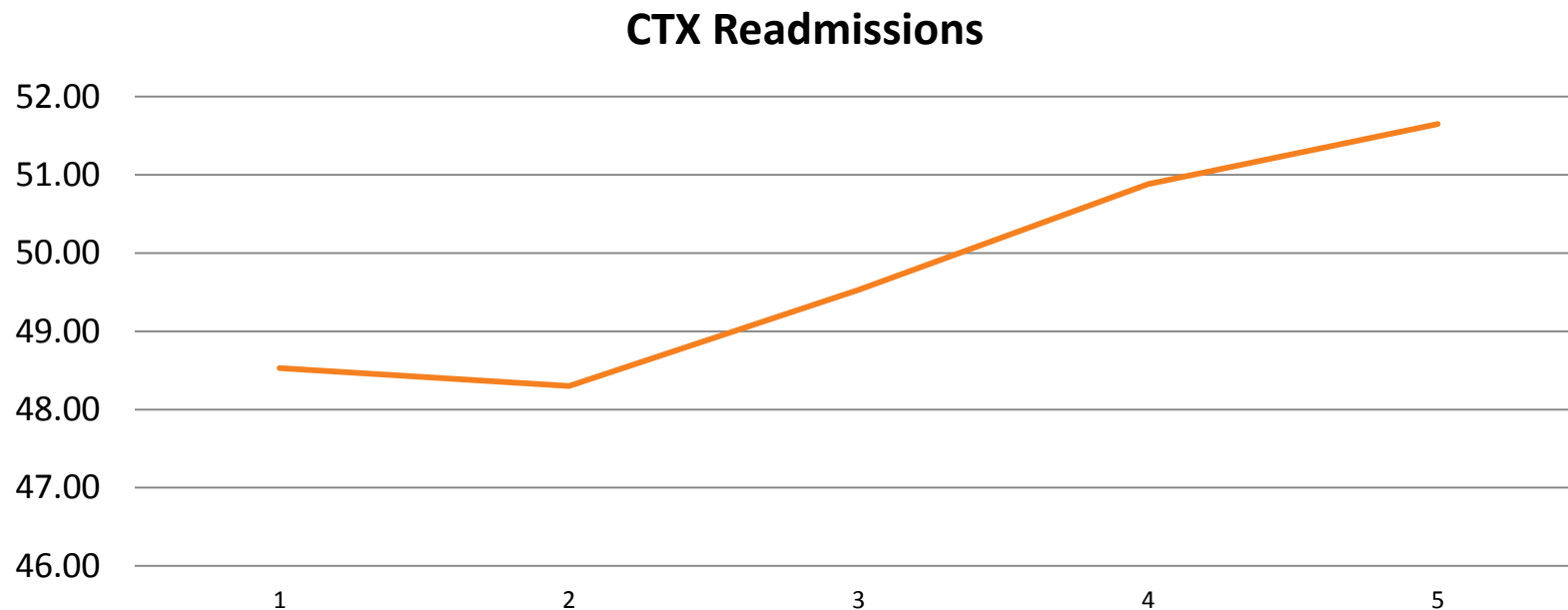
Rolling 4-Quarter Admissions per 1,000

CTX Admissions



Source: NCC Scorecard Dec 2015. CMS FFS data 7/1/2013 – 6/30/2015

Rolling 4-Quarter Readmissions per 1,000



Source: NCC Scorecard Dec 2015. CMS FFS data 7/1/2013 – 6/30/2015

Successful Interventions

- Utilize data to drive change
- Build a foundation of trust in the community
- Best practice interventions
 - › Coleman Care Transitions Intervention Model
 - › INTERACT
 - › Project RED
 - › Home Health Quality Improvement

Resources

- TMF QIN-QIO Website: <http://tmfqin.org/>
- Home Health Quality Improvement National Campaign: www.homehealthquality.org
- INTERACT II: <http://Interact2.net>
- Care Transitions Intervention: www.caretransitions.org
- Re-engineering Discharge: <http://www.bu.edu/fammed/projectred/index.html>
- Project BOOST: http://www.hospitalmedicine.org/Web/Quality_Innovation/Implementation_Toolkits/Project_BOOST/Web/Quality_Innovation/Implementation_Toolkit/Boost/Overview.aspx

Resources, cont.

- Agency for Healthcare Research and Quality: www.ahrq.gov
- PEPPER: <http://PEPPERresources.org>
- Hospital to Home:
<http://cvquality.acc.org/en/Initiatives/H2H/About-H2H.aspx>
- Institute for Healthcare Improvement:
<http://www.ihl.org/resources/Pages/Tools/HowtoGuideImprovingTransitionsfromHospitaltoHomeHealthCareReduceAvoidableHospitalizations.aspx>

About the QIN-QIO Program

Leading rapid, large-scale change in health quality:

- Goals are bolder.
- The patient is at the center.
- All improvers are welcome.
- Everyone teaches and learns.
- Greater value is fostered.

About the TMF QIN-QIO

TMF Health Quality Institute has partnered with the Arkansas Foundation for Medical Care, Primaris in Missouri and the Quality Improvement Professional Organization, Inc. in Puerto Rico to form the TMF Quality Innovation Network Quality Improvement Organization (TMF QIN-QIO), under contract with the Centers for Medicare & Medicaid Services (CMS). The TMF QIN-QIO works with providers across all care settings to provide quality improvement services in the states of Arkansas, Missouri, Oklahoma and Texas, and the territory of Puerto Rico.

TMF QIN-QIO Website

<http://www.tmfqin.org>

- Provides targeted technical assistance and engages providers and stakeholders in improvement initiatives through numerous Learning and Action Networks (LANs).
- The networks serve as information hubs to monitor data, engage relevant organizations, facilitate learning and sharing of best practices, reduce disparities and elevate the voice of the patient.



LANs

Join any of the following [TMFQIN.org](https://www.tmfqin.org) networks and you can sign up to receive email notifications to stay current on announcements, emerging content, events and discussions in the online forums.

- Cardiovascular Health and Million Hearts
- Health for Life – Everyone with Diabetes Counts
- Healthcare-Associated Infections
- Meaningful Use
- Medication Safety
- Nursing Home Quality Improvement
- Patient and Family
- Quality Improvement Initiative
- Readmissions
- Value-Based Improvement and Outcomes

All Are Welcome

- To join, create a free account at <http://www.tmfqin.org/>. Visit the Networks tab for more information.
- As you complete registration, follow the prompts to choose the network(s) you would like to join.

Contact

Nanci Newberry, RN, M.Ed
Quality Improvement Consultant
TMF Health Quality Institute
Phone: 830-358-2105

Nanci.Newberry@area-b.hcqis.org